



Fenders



BettsHD[®]
Parts for the Long Haul[®]

"LIFE-TIME" OUR NAME SAYS IT ALL



Life-Time Fenders started more than thirty years ago with a simple idea: Build truck fenders strong and durable so they last as long as the truck they were installed on. Our corrugated steel fenders were born from this simple idea and were among the first of their type in the industry. Their reputation for toughness and long-lasting quality built the foundation for our company.

As our industry has changed and expanded over the last three decades, Life-Time Fenders has continued to adjust and grow while staying firmly fixed on our continuing dedication to earn your trust. We now offer over four hundred (400) part numbers to fit your specific application requirements, many of which are new and innovative because you asked.

Our exciting merger with Betts Spring Company in 2007 continues to write new chapters in the history of Life-Time Fenders. Significant investments in engineering, technology and field sales support have resulted in many new products and market opportunities, but our long standing commitment to client relationships remains unchanged and unchallenged! When you call Life-Time Fenders, you will always be greeted with a cheerful voice, a warm smile and in-depth knowledge about our products to meet your requirements.

**Welcome To
Life-Time Fenders!!**



Proudly Manufactured in the USA



**A WARRANTY SO GOOD...
WE NAMED THE COMPANY AFTER IT!**

Table of Contents

What's New at Life-Time?	2-3
Quarter Fenders	4-5
Quarter Fender Replacement Parts	6-7
Total Installation Kits (TIK)	8-9
Single Axle	10-11
Half Tandem	12-13
Full Tandem	14-15
Special Applications	16-17
Mounting Bracket Kits	18-19
Individual Brackets & Replacement Parts	20-21
Mud Flap Hangers	22-23
What You Need to Know	24
Life-Time Standard Dimensions	25



Throughout our catalog you will see the “LTF” symbol, denoting our products for which a limited lifetime warranty is conveyed with purchase. Our warranty is simple yet profound. Any Life-Time product covered by our limited lifetime warranty is warranted against rust and material cracking along its edge resulting from vibration and normal road wear as well as workmanship defects. Our products are not warranted against failure due to improper installation or abnormal abuse. For a complete copy of our limited lifetime warranty, visit www.lifetimetruck.com.

Color coding is used throughout the catalog
Stainless Steel Aluminum Galvanized Poly

WHAT'S NEW AT LIFE-TIME?



CRADLE MOUNT QUARTER FENDERS

Stainless steel and aluminum
Standard and Low Mount
Hidden mounting hardware
Fully assembled complete kits
Life-Time top flaps included

See pages 4-5 for details



SUPER SMOOTH FENDERS

.125" polished or mill finish aluminum
3" flanged edge
Single axle, half and full tandem

See pages 8-15 for details

TOTAL INSTALLATION KITS (TIK)

COMPLETE half and full tandem kits
You choose from the four most popular styles
All TIK kits include our universal adjustable center brackets
ONE part number does it ALL

See pages 8-9 for details



WHAT'S NEW AT LIFE-TIME?



UNIVERSAL ADJUSTABLE CENTER BRACKET

- 3-1/2" vertical adjustment
- Premium e-coat finish
- Unhanded, left or right application
- Sold individually and supplied in universal installation kits

See pages 18-20 for details

MUD FLAP HANGERS

- Complete offering of popular hangers
- Bar type and spring loaded
- Display barrels and pails
- Conspicuity strips
- Mounting brackets

See pages 22-23 for details



QUARTER FENDERS

CRADLE MOUNT QUARTER FENDERS

18 gauge stainless steel with stainless steel cradle and mounting tubes
 .090" aluminum with aluminum cradle and galvanized mounting tubes

Standard and Low Mount

Hidden mounting hardware

Fully assembled complete kits

Life-Time top flaps included

STANDARD MOUNT



PART NUMBER	MATERIAL	MOUNT	WHEEL APPLICATION	WEIGHT
SS200B2	Stainless	No Mount	24.5"	28#
SS200B2X	Stainless	One Bolt	24.5"	35#
SS200B2XF	Stainless	Four Bolt	24.5"	35#
SS200U	Stainless	Crossover	24.5"	35#
SA200B2	Aluminum	No Mount	24.5"	23#
SA200B2X	Aluminum	One Bolt	24.5"	30#
SA200B2XF	Aluminum	Four Bolt	24.5"	30#
SA200U	Aluminum	Crossover	24.5"	30#

LOW MOUNT



PART NUMBER	MATERIAL	MOUNT	WHEEL APPLICATION	WEIGHT
SS300B2	Stainless	No Mount	24.5"	28#
SS300B2X	Stainless	One Bolt	24.5"	35#
SS300B2XF	Stainless	Four Bolt	24.5"	35#
SS300U	Stainless	Crossover	24.5"	35#
SA300B2	Aluminum	No Mount	24.5"	23#
SA300B2X	Aluminum	One Bolt	24.5"	30#
SA300B2XF	Aluminum	Four Bolt	24.5"	30#
SA300U	Aluminum	Crossover	24.5"	30#

POLY - Lightweight and Durable

100% virgin polyethylene

Standard Mount only

Hidden mounting hardware

Fully assembled complete kits

Life-Time top flaps included

Galvanized mounting tube



PART NUMBER	MATERIAL	MOUNT	WHEEL APPLICATION	WEIGHT
PS200B2	Poly	No Mount	24.5"	23#
PS200B2X	Poly	One Bolt	24.5"	27#
PS200B2XF	Poly	Four Bolt	24.5"	27#
PS200U	Poly	Crossover	24.5"	31#

QUARTER FENDERS

MONOGRAM SERIES CRADLE MOUNT QUARTER FENDERS

18 gauge stainless steel
Choose from three stock monograms
Special order Custom monograms available
No minimum order quantity - No setup charge

STANDARD MOUNT

PART NUMBER	MATERIAL	MONOGRAM	MOUNT	WHEEL APPLICATION	WEIGHT
SM200B2EG	Stainless	Eagle	No Mount	24.5"	28#
SM200B2XEG	Stainless	Eagle	One Bolt	24.5"	35#
SM200B2FL	Stainless	Flame	No Mount	24.5"	28#
SM200B2XFL	Stainless	Flame	One Bolt	24.5"	35#
SM200B2LH	Stainless	Longhorn	No Mount	24.5"	28#
SM200B2XLH	Stainless	Longhorn	One Bolt	24.5"	35#
SM200B2C	Stainless	CUSTOM	No Mount	24.5"	28#
SM200B2XC	Stainless	CUSTOM	One Bolt	24.5"	35#



U-BOLT MOUNT QUARTER FENDERS

Heavy-duty 16 gauge stainless steel
Standard Mount only
Rugged u-bolt mounting hardware
Unassembled complete kits
Life-Time top flaps included

PART NUMBER	MATERIAL	MOUNT	WHEEL APPLICATION	WEIGHT
SS100B2	Stainless	No Mount	24.5"	32#
SS100B2X	Stainless	One Bolt	24.5"	38#
SS100B2XF	Stainless	Four Bolt	24.5"	38#
SS100U	Stainless	Crossover	24.5"	39#
SP100B2	Painted Steel	No Mount	24.5"	27#
SP100B2X	Painted Steel	One Bolt	24.5"	33#
SP100B2XF	Painted Steel	Four Bolt	24.5"	33#
SP100U	Painted Steel	Crossover	24.5"	34#



OEM logo top flaps available on all quarter fenders

See page 7 for details

Special order Custom top flap logos available
Minimum order quantity and setup charges apply

QUARTER FENDER REPLACEMENT PARTS

STUB MOUNTS



X1900
12" One Bolt



X2900
8" One Bolt
X2900K
Ten-pack of X2900



X1900F
12" Four Bolt



X2900F
8" Four Bolt

CROSSOVER MOUNTS



B1G
93" galvanized tube

B48G
48" galvanized tube

HARDWARE



SS100H
Zinc plated, use
with 100 series



B2XH
Zinc plated, universal
tube mount clamp



UH
Zinc plated, use
with crossover mounts

QUARTER FENDER REPLACEMENT PARTS

TOP FLAPS

Poly 24 "x 6" - Sold individually
 Mounting hardware not included
 Special order Custom logos available
 Minimum order quantity required



PART NUMBER	LOGO - MATERIAL COLOR
F1SLT	Life-Time - Black
F1SE	Eagle - White
F1FLM	Flame - Black
F1SLH	Longhorn - Black
F1SPL	None - Black
F1SPLW	None - White

PART NUMBER	LOGO - MATERIAL COLOR
F1SF	Ford - White
F1SL	Freightliner - Black
F1SN	International - Black
F1SK	Kenworth - White
F1SMN	Mack - Black
F1SMG	Mack - Gray
F1SMW	Mack - White
F1SP	Peterbilt - White
F1SG	Volvo - White
F1SW	Western Star - White



28" SLOTTED MOUNTING TUBES

PART NUMBER	MATERIAL / STYLE
B3SX	Stainless, use with cradle mount
B2SX	Stainless, use with u-bolt mount
B3GX	Galvanized, predrilled
B2GX	Galvanized, undrilled

HARDWARE



TFH100
 Stainless steel,
 individual top flap

PS100H
 Zinc plated,
 individual top flap



SSC100
 Stainless steel,
 tube cradle

SAC100
 Aluminum,
 tube cradle



CP18
 Poly,
 tube end cap



NP18
 Nickel plated,
 tube end cap

TOTAL INSTALLATION KITS (TIK)

HALF TANDEM KITS

Life-Time's EXCLUSIVE "TIK" part numbers include two fenders with vibration absorbing rubber insulators and all brackets and hardware for a TOTAL installation. ONE part number does it ALL
Four styles to choose from:



Kit includes:

66" Super Smooth polished aluminum fenders
Triangle mount front brackets
Universal adjustable rear brackets
All stainless steel hardware

Kit Part # - TIKSA300-66TS



Kit includes:

66" 2Smooth stainless fenders
Predrilled stainless steel front brackets
Universal adjustable rear brackets
All stainless steel hardware

Kit Part # - TIKSR300-66NLDS

4 RIB

Kit includes:

66" 4 RIB stainless fenders
Predrilled stainless steel front brackets
Universal adjustable rear brackets
All stainless steel hardware

Kit Part # - TIKSR300-66DS

POLY

Kit includes:

66" Poly fenders
Galvanized steel front brackets
Universal adjustable rear brackets
Galvanized u-bolt hardware

Kit Part # - TIKPF300-66P



TOTAL INSTALLATION KITS (TIK)

FULL TANDEM KITS

Life-Time's EXCLUSIVE "TIK" part numbers include two fenders with vibration absorbing rubber insulators and all brackets and hardware for a TOTAL installation.

ONE part number does it ALL

Four styles to choose from:



Kit includes:

132" Super Smooth polished aluminum fenders

Triangle mount front and rear brackets

Universal adjustable center brackets

All stainless steel hardware

Kit Part # - TIKSA400-132TS



Kit includes:

126" 2Smooth stainless fenders

Predrilled stainless steel front and rear brackets

Universal adjustable center brackets

All stainless steel hardware

Kit Part # - TIKSR400-126NLDS

4 RIB

Kit includes:

126" 4 RIB stainless fenders

Predrilled stainless steel front and rear brackets

Universal adjustable center brackets

All stainless steel hardware

Kit Part # - TIKSR400-126DS

POLY

Kit includes:

132" Poly fenders

Galvanized steel front and rear brackets

Universal adjustable center brackets

Galvanized u-bolt hardware

Kit Part # - TIKPF400-132XP



SINGLE AXLE



**.125" polished aluminum or
.125" mill finish aluminum**

PART NUMBER	MATERIAL	(A) OVERALL LENGTH	(B) OPENING	WHEEL APPLICATION	WEIGHT
SA200-80	Polished Aluminum	80"	50"	24.5"	55#
MA200-80	Mill Finish Aluminum	80"	50"	24.5"	55#



**18 gauge mirror stainless steel
Beaded edge for maximum strength**

PART NUMBER	MATERIAL	MONOGRAM	(A) OVERALL LENGTH	(B) OPENING	WHEEL APPLICATION	WEIGHT
SR200-80NL	Stainless	None	80"	50"	24.5"	59#
SR200-80MEG	Stainless	Eagle	80"	50"	24.5"	59#
SR200-80MFL	Stainless	Flame	80"	50"	24.5"	59#
SR200-80MLH	Stainless	Longhorn	80"	50"	24.5"	59#
SR200-80MC	Stainless	<u>Custom</u>	80"	50"	24.5"	59#



**Choose no monogram or one of three stock monograms
Special order Custom monograms available
No minimum order quantity - No setup charge**

COMPLETE INSTALLATION KITS

Sold separately

TUBULAR	DRILLED TUBULAR	TRIANGLE
L200S	L200DS	L200TS

SINGLE AXLE CHART



Custom sizes not available for Super Smooth

SINGLE AXLE

4 RIB - 18 gauge mirror stainless steel Beaded edge for maximum strength

PART NUMBER	MATERIAL	(A) OVERALL LENGTH	(B) OPENING	WHEEL APPLICATION	WEIGHT
SR200-60	Stainless	60"	43"	24.5"	44#
GR200-60	Galvanized	60"	43"	24.5"	44#
AR200-60	Aluminum	60"	43"	24.5"	29#
SR200-80	Stainless	80"	50"	24.5"	59#
GR200-80	Galvanized	80"	50"	24.5"	59#
AR200-80	Aluminum	80"	50"	24.5"	38#



CORRUGATED - 18 gauge mirror stainless steel Corrugations absorb maximum vibration

PART NUMBER	MATERIAL	(A) OVERALL LENGTH	(B) OPENING	WHEEL APPLICATION	WEIGHT
MS200-80	Stainless	80"	50"	24.5"	59#
G200-80	Galvanized	80"	50"	24.5"	59#
A200-80	Aluminum	80"	50"	24.5"	26#



POLY - Special order Custom colors available Minimum order quantity required

PART NUMBER	MATERIAL	(A) OVERALL LENGTH	(B) OPENING	WHEEL APPLICATION	WEIGHT
PF200-60	Poly	60"	44"	24.5"	18#
PF200-68	Poly	68"	46"	24.5"	29#



COMPLETE INSTALLATION KITS

Sold separately

FENDER MODEL	TUBULAR	DRILLED TUBULAR	TRIANGLE
SR	L200S	L200DS	L200TS
GR	L200G	L200DG	NA
AR	L200G	L200DG	NA
MS	L200S	NA	NA
G	L200G	NA	NA
A	L200G	NA	NA
PF	L200P	NA	NA

SINGLE AXLE CHART



Custom sizes available on all metal fenders

No Extra Time

HALF TANDEM



**.125" polished aluminum or
.125" mill finish aluminum**

PART NUMBER	MATERIAL	OVERALL LENGTH	OPENING	(A) FRONT CURVE	(B) FLAT	WHEEL APPLICATION	WEIGHT
SA300-66	Polished Aluminum	66"	51"	39"	27"	24.5"	44#
MA300-66	Mill Finish Aluminum	66"	51"	39"	27"	24.5"	44#



**18 gauge mirror stainless steel
Beaded edge for maximum strength**

PART NUMBER	MATERIAL	MONOGRAM	OVERALL LENGTH	OPENING	(A) FRONT CURVE	(B) FLAT	WHEEL APPLICATION	WEIGHT
SR300-66NL	Stainless	None	66"	51"	39"	27"	24.5"	49#
SR300-66MEG	Stainless	Eagle	66"	51"	39"	27"	24.5"	49#
SR300-66MFL	Stainless	Flame	66"	51"	39"	27"	24.5"	49#
SR300-66MLH	Stainless	Longhorn	66"	51"	39"	27"	24.5"	49#
SR300-66MC	Stainless	Custom	66"	51"	39"	27"	24.5"	49#



**Choose no monogram or one of three stock monograms
Special order Custom monograms available
No minimum order quantity - No setup charge**

COMPLETE INSTALLATION KITS

Sold separately

HALF TANDEM CHART



TUBULAR	DRILLED TUBULAR	TRIANGLE
U300S	U300DS	U300TS

Custom sizes not available for Super Smooth

HALF TANDEM

4 RIB - 18 gauge mirror stainless steel Rubber insulator included with each fender

PART NUMBER	MATERIAL	OVERALL LENGTH	OPENING	(A) FRONT CURVE	(B) FLAT	WHEEL APPLICATION	WEIGHT
SR300-60	Stainless	60"	48"	35"	25"	24.5"	44#
GR300-60	Galvanized	60"	48"	35"	25"	24.5"	44#
AR300-60	Aluminum	60"	48"	35"	25"	24.5"	29#
SR300-66	Stainless	66"	51"	39"	27"	24.5"	49#
GR300-66	Galvanized	66"	51"	39"	27"	24.5"	49#
AR300-66	Aluminum	66"	51"	39"	27"	24.5"	31#
SR300-80	Stainless	80"	76"	24"	56"	24.5"	59#
GR300-80	Galvanized	80"	76"	24"	56"	24.5"	59#
AR300-80	Aluminum	80"	76"	24"	56"	24.5"	38#



CORRUGATED - 18 gauge mirror stainless steel Corrugations absorb maximum vibration

PART NUMBER	MATERIAL	OVERALL LENGTH	OPENING	(A) FRONT CURVE	(B) FLAT	WHEEL APPLICATION	WEIGHT
MS300-66	Stainless	66"	51"	39"	27"	24.5"	49#
G300-66	Galvanized	66"	51"	39"	27"	24.5"	49#
A300-66	Aluminum	66"	51"	39"	27"	24.5"	22#
MS300-80	Stainless	80"	76"	24"	56"	24.5"	59#
G300-80	Galvanized	80"	76"	24"	56"	24.5"	59#
A300-80	Aluminum	80"	76"	24"	56"	24.5"	26#



POLY - Special order Custom colors available Minimum order quantity required

PART NUMBER	MATERIAL	OVERALL LENGTH	OPENING	(A) FRONT CURVE	(B) FLAT	WHEEL APPLICATION	WEIGHT
PF300-57	Poly	57"	48"	30"	27"	24.5"	20#
PF300-66	Poly	66"	51"	39"	27"	24.5"	24#



COMPLETE INSTALLATION KITS

Sold separately

FENDER MODEL	TUBULAR	DRILLED TUBULAR	TRIANGLE
SR	U300S	U300DS	U300TS
GR	U300G	U300DG	NA
AR	U300G	U300DG	NA
MS	U300S	NA	NA
G	U300G	NA	NA
A	U300G	NA	NA
PF	U300P	NA	NA

HALF TANDEM CHART



Custom sizes available on all metal fenders

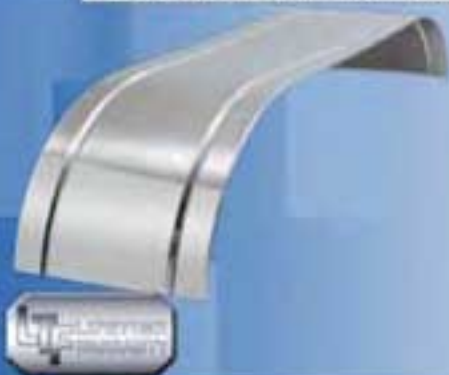
No Extra Time

FULL TANDEM



**.125" polished aluminum or
.125" mill finish aluminum**

PART NUMBER	MATERIAL	OVERALL LENGTH	OPENING	(A) FRONT CURVE	(B) FLAT	(C) REAR CURVE	WHEEL APPLICATION	WEIGHT
SA400-132	Polished Aluminum	132"	105"	39"	54"	39"	24.5"	88#
MA400-132	Mill Finish Aluminum	132"	105"	39"	54"	39"	24.5"	88#



**18 gauge mirror stainless steel
Beaded edge for maximum strength**

PART NUMBER	MATERIAL	MONOGRAM	OVERALL LENGTH	OPENING	(A) FRONT CURVE	(B) FLAT	(C) REAR CURVE	WHEEL APPLICATION	WEIGHT
SR400-126NL	Stainless	None	126"	104"	39"	54"	33"	24.5"	93#
SR400-126MEG	Stainless	Eagle	126"	104"	39"	54"	33"	24.5"	93#
SR400-126MFL	Stainless	Flame	126"	104"	39"	54"	33"	24.5"	93#
SR400-126MLH	Stainless	Longhorn	126"	104"	39"	54"	33"	24.5"	93#
SR400-126MC	Stainless	Custom	126"	104"	39"	54"	33"	24.5"	93#



**Choose no monogram or one of three stock monograms
Special order Custom monograms available
No minimum order quantity - No setup charge**

COMPLETE INSTALLATION KITS

Sold separately

FULL TANDEM CHART

TUBULAR	DRILLED TUBULAR	TRIANGLE
U400S	U400DS	U400TS



Custom sizes not available for Super Smooth

FULL TANDEM

4 RIB - 18 gauge mirror stainless steel Rubber insulator included with each fender

PART NUMBER	MATERIAL	OVERALL LENGTH	OPENING	(A) FRONT CURVE	(B) FLAT	(C) REAR CURVE	WHEEL APPLICATION	WEIGHT
SR400-105	Stainless	105"	100"	25"	55"	25"	24.5"	78#
GR400-105	Galvanized	105"	100"	25"	55"	25"	24.5"	78#
AR400-105	Aluminum	105"	100"	25"	55"	25"	24.5"	50#
SR400-120	Stainless	120"	100"	35"	54"	31"	24.5"	89#
GR400-120	Galvanized	120"	100"	35"	54"	31"	24.5"	89#
AR400-120	Aluminum	120"	100"	35"	54"	31"	24.5"	57#
SR400-126	Stainless	126"	104"	39"	54"	33"	24.5"	93#
GR400-126	Galvanized	126"	104"	39"	54"	33"	24.5"	93#
AR400-126	Aluminum	126"	104"	39"	54"	33"	24.5"	60#



CORRUGATED - 18 gauge mirror stainless steel Corrugations absorb maximum vibration

PART NUMBER	MATERIAL	OVERALL LENGTH	OPENING	(A) FRONT CURVE	(B) FLAT	(C) REAR CURVE	WHEEL APPLICATION	WEIGHT
MS400-105	Stainless	105"	96"	25"	55"	25"	24.5"	78#
G400-105	Galvanized	105"	96"	25"	55"	25"	24.5"	78#
A400-105	Aluminum	105"	96"	25"	55"	25"	24.5"	34#
MS400-116	Stainless	116"	97"	43"	49"	24"	24.5"	86#
G400-116	Galvanized	116"	97"	43"	49"	24"	24.5"	86#
A400-116	Aluminum	116"	97"	43"	49"	24"	24.5"	38#
MS400-126	Stainless	126"	104"	39"	54"	33"	24.5"	93#
G400-126	Galvanized	126"	104"	39"	54"	33"	24.5"	93#
A400-126	Aluminum	126"	104"	39"	54"	33"	24.5"	60#



POLY - Minimum order quantity required for Custom colors See page 21 for important component details

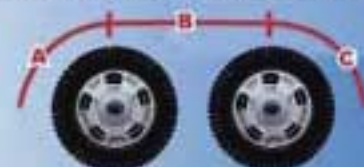
PART NUMBER	MATERIAL	OVERALL LENGTH	OPENING	(A) FRONT CURVE	(B) FLAT	(C) REAR CURVE	WHEEL APPLICATION	WEIGHT
PF400-114X	Poly	114"	96"	30"	54"	30"	24.5"	40#
PF400-132X	Poly	132"	105"	39"	54"	39"	24.5"	48#



COMPLETE INSTALLATION KITS - Sold separately

FENDER MODEL	TUBULAR	DRILLED TUBULAR	TRIANGLE
SR	U400S	U400DS	U400TS
GR	U400G	U400DG	NA
AR	U400G	U400DG	NA
MS	U400S	NA	NA
G	U400G	NA	NA
A	U400G	NA	NA
PF	U400P	NA	NA

FULL TANDEM CHART



Custom sizes available on all metal fenders

No Extra Time

SPECIAL APPLICATIONS

SUPER SINGLE FENDERS

SINGLE AXLE CHART

3 RIB • 18-1/2" overall width



Single Axle

PART NUMBER	MATERIAL	(A) OVERALL LENGTH	(B) OPENING	WHEEL APPLICATION	WEIGHT
SR250-80	Stainless	80"	50"	24.5"	47#
GR250-80	Galvanized	80"	50"	24.5"	47#
AR250-80	Aluminum	80"	50"	24.5"	31#

HALF TANDEM CHART



Half Tandem

PART NUMBER	MATERIAL	OVERALL LENGTH	OPENING	(A) FRONT CURVE	(B) FLAT	WHEEL APPLICATION	WEIGHT
SR350-66	Stainless	66"	51"	39"	27"	24.5"	39#
GR350-66	Galvanized	66"	51"	39"	27"	24.5"	39#
AR350-66	Aluminum	66"	51"	39"	27"	24.5"	25#

FULL TANDEM CHART



Full Tandem

PART NUMBER	MATERIAL	OVERALL LENGTH	OPENING	(A) FRONT CURVE	(B) FLAT	(C) REAR CURVE	WHEEL APPLICATION	WEIGHT
SR450-105	Stainless	105"	96"	25"	55"	25"	24.5"	62#
GR450-105	Galvanized	105"	96"	25"	55"	25"	24.5"	62#
AR450-105	Aluminum	105"	96"	25"	55"	25"	24.5"	40#
SR450-126	Stainless	126"	104"	39"	54"	33"	24.5"	74#
GR450-126	Galvanized	126"	104"	39"	54"	33"	24.5"	74#
AR450-126	Aluminum	126"	104"	39"	54"	33"	24.5"	48#

Custom sizes available on all metal fenders - No Extra Time

SPECIAL APPLICATIONS

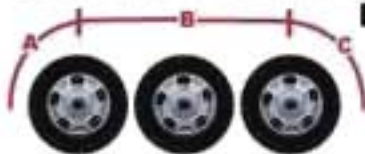
MEDIUM AND LIGHT DUTY FENDERS

Fit 19.5" and 16.5" wheel sizes



PART NUMBER	MATERIAL	STYLE	OVERALL LENGTH	OPENING	WHEEL APPLICATION	WEIGHT
SR100-60	Stainless	3 RIB	60"	38"	16.5"	35#
GR100-60	Galvanized	3 RIB	60"	38"	16.5"	35#
AR100-60	Aluminum	3 RIB	60"	38"	16.5"	23#
SR195-60	Stainless	4 RIB	60"	38"	19.5"	45#
GR195-60	Galvanized	4 RIB	60"	38"	19.5"	45#
AR195-60	Aluminum	4 RIB	60"	38"	19.5"	29#
SR195-60NL	Stainless	2Smooth	60"	38"	19.5"	45#
PF100-52	Poly	Poly	52"	42"	16.5"	12#
PF100-60	Poly	Poly	60"	46"	19.5"	18#

TRI-AXLE CHART



TRI-AXLE FENDERS

Maximum overall material length available is 160"

Custom curving available to meet your requirement



PART NUMBER	MATERIAL	STYLE	OVERALL LENGTH	OPENING	(A) FRONT CURVE	(B) FLAT	(C) REAR CURVE	WHEEL APPLICATION	WEIGHT
SR500-140	Stainless	4 RIB	140"	134"	21"	98"	21"	24.5"	104#
GR500-140	Galvanized	4 RIB	140"	134"	21"	98"	21"	24.5"	104#
AR500-140	Aluminum	4 RIB	140"	134"	21"	98"	21"	24.5"	67#
MS500-140	Stainless	Corrugated	140"	134"	21"	98"	21"	24.5"	104#
G500-140	Galvanized	Corrugated	140"	134"	21"	98"	21"	24.5"	104#
A500-140	Aluminum	Corrugated	140"	134"	21"	98"	21"	24.5"	46#
MS500-160	Stainless	Corrugated	160"	147"	31"	98"	31"	24.5"	118#
G500-160	Galvanized	Corrugated	160"	147"	31"	98"	31"	24.5"	118#
A500-160	Aluminum	Corrugated	160"	147"	31"	98"	31"	24.5"	53#

Custom sizes available on all metal fenders - No Extra Time

MOUNTING BRACKET KITS

SINGLE AXLE KITS

Complete kit installs two fenders



Undrilled tubular – Use with any fender style

KIT NUMBER	FRONT BRACKET	REAR BRACKET	HARDWARE
L200S	(2) B607S	(2) B607S	(2) B4HS
L200G	(2) B607G	(2) B607G	(2) B4H
L200P	(2) B607G	(2) B607G	(2) P100H

Predrilled tubular – Use with 4 RIB, 2Smooth and Super Smooth styles

KIT NUMBER	FRONT BRACKET	REAR BRACKET	HARDWARE
L200DS	(2) B607DS	(2) B607DS	(2) B4HS
L200DG	(2) B607DG	(2) B607DG	(2) B4H

Triangle – For use with 4 RIB, 2Smooth and Super Smooth styles

KIT NUMBER	FRONT BRACKET	REAR BRACKET	HARDWARE
L200TS	(2) B610TS	(2) B610TS	(2) TS100H

HALF TANDEM KITS

Complete kit installs two fenders



Undrilled tubular – Use with any fender style

KIT NUMBER	FRONT BRACKET	REAR BRACKET	HARDWARE
U300S	(2) B607S	(2) B900	(2) B4HS
U300G	(2) B607G	(2) B900	(2) B4H
U300P	(2) B607G	(2) B900	(1) B4H / (1) P100H

Predrilled tubular – Use with 4 RIB, 2Smooth and Super Smooth styles

KIT NUMBER	FRONT BRACKET	REAR BRACKET	HARDWARE
U300DS	(2) B607DS	(2) B900	(2) B4HS
U300DG	(2) B607DG	(2) B900	(2) B4H

Triangle – For use with 4 RIB, 2Smooth and Super Smooth styles

KIT NUMBER	FRONT BRACKET	REAR BRACKET	HARDWARE
U300TS	(2) B610TS	(2) B900	(1) B4HS / (1) TS100H

MOUNTING BRACKET KITS

FULL TANDEM KITS

Complete kit installs two fenders



Undrilled tubular – Use with any fender style

KIT NUMBER	FRONT / REAR BRACKET	CENTER BRACKET	HARDWARE
U400S	(4) B607S	(2) B900	(3) B4HS
U400G	(4) B607G	(2) B900	(3) B4H
U400P	(4) B607G	(2) B900	(1) B4H / (2) P100H

Predrilled tubular – Use with 4 RIB, 2Smooth and Super Smooth styles

KIT NUMBER	FRONT / REAR BRACKET	CENTER BRACKET	HARDWARE
U400DS	(4) B607DS	(2) B900	(3) B4HS
U400DG	(4) B607DG	(2) B900	(3) B4H

Triangle – For use with 4 RIB, 2Smooth and Super Smooth styles

KIT NUMBER	FRONT / REAR BRACKET	CENTER BRACKET	HARDWARE
U400TS	(4) B610TS	(2) B900	(1) B4HS / (2) TS100H

TRIANGLE MOUNT FRONT / REAR BRACKET

Stainless steel

Rubber gasket included, TSG100

Stainless mounting hardware included, TS100H

Sold individually



B610TS

INDIVIDUAL MOUNTING BRACKETS

UNIVERSAL ADJUSTABLE CENTER BRACKET

3-½" vertical adjustment

Premium e-coat finish

Unhanded, left or right application

Sold individually and supplied in all
universal installation kits

See pages 18-19 for details



B900

ONE BOLT FRONT / REAR BRACKETS

12 gauge stainless steel or galvanized

Fender mounting hardware included

5/8" mounting hole



B607DS

Predrilled stainless,
with **B4HS**

B607DG

Predrilled galvanized,
with **B4H**



B607S

Undrilled stainless,
with **B4HS**

B607G

Undrilled galvanized,
with **B4H**

REPLACEMENT PARTS

HARDWARE



B4HS
Stainless

B4H
Galvanized



CS100H

Stainless, eight (8) u-bolts

CG100H

Galvanized, eight (8) u-bolts



P100H

Galvanized, six (6) u-bolts



TS100H

Stainless, use with B610TS triangle brackets



PF400H

Galvanized

VIBRATION INSULATORS



SF100H

Rubber insulator absorbs vibration
For use with 4 RIB and 2Smooth,
half and full tandem fenders
Included with each fender
Sold in pairs



SF200H

Rubber insulator absorbs vibration
For use with Super Smooth,
half and full tandem fenders
Included with each fender
Sold in pairs



TSG100

Rubber gasket for
B610TS triangle bracket
Self-adhesive and serves as
hole pattern template
Sold individually

POLY FULL TANDEM COMPONENTS

PART NUMBER	MATERIAL	FRONT SECTION	REAR SECTION	HARDWARE
PF400-114X	Poly	(2) PF300-57-1	(2) PF300-57-1	(1) PF400H
PF400-132X	Poly	(2) PF300-66-1	(2) PF300-66-1	(1) PF400H

MUD FLAP HANGERS

BAR TYPE

Complete kits include mounting brackets and hardware



FS52K
.640" straight, square bar



FA53K
.640" angled down, square bar

STAINLESS STEEL SPRING LOADED

Complete kits include all hardware • 2.50" mounting stud centers



FSS07NX
30.25" straight, tapered

POWDER COATED SPRING LOADED

Complete kits include all hardware • 1.18" mounting stud centers



FSC75CX
30.25" straight, with
integrated conspicuity tape



FAC76CX
30.25" angled down, with
integrated conspicuity tape



FSC25NX
25.25" straight,
without conspicuity tape



FAC26NX
26.30" angled down,
without conspicuity tape

CONSPICUITY STRIPS

Be sure you meet federal conspicuity requirements • Sold individually



FS52CXU



FA53CXL



FA53CXR

MUD FLAP HANGERS



FH615P

Individual mud flap installation kits
Fifty (50) count Point-of-Purchase pail

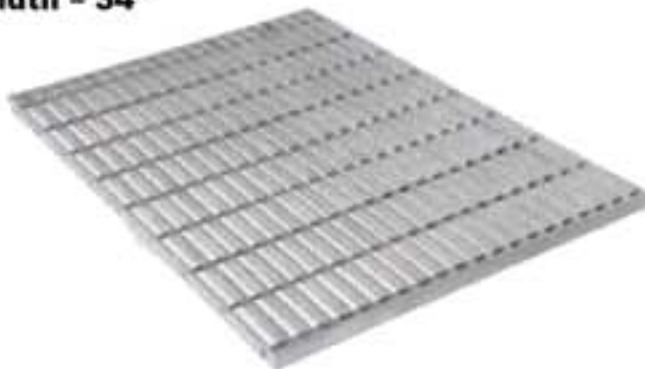


FC117B

Bar type hanger mounting bracket
Sold individually

SAFETY DECK PLATES

Aluminum or galvanized
Mounting hardware included
Thickness - 1/8"
Height - 1"
Width - 34"



HARDWARE

AGH100

Aluminum, use with AG series

GGH100

Galvanized, use with GG series



FORTY (40) COUNT DISPLAY BARRELS



FS52BL

.640" straight, square bar type

FA53BL

.640" angled down, square bar type

PART NUMBER	MATERIAL	LENGTH	WEIGHT
AG1234	Aluminum	12"	5#
GG1234	Galvanized	12"	15#
AG1834	Aluminum	18"	7#
GG1834	Galvanized	18"	22#
AG2434	Aluminum	24"	10#
GG2434	Galvanized	24"	29#
AG3634	Aluminum	36"	15#
GG3634	Galvanized	36"	45#
AG4834	Aluminum	48"	20#

WHAT YOU NEED TO KNOW



APPLICATION

Quarter Single Axle Half Tandem Full Tandem Tri-Axle

WHEEL SIZE

24.5" Dual 24.5" Super Single
19.5" Medium Duty 16.5" Light Duty

STYLE



4 RIB
Corrugated



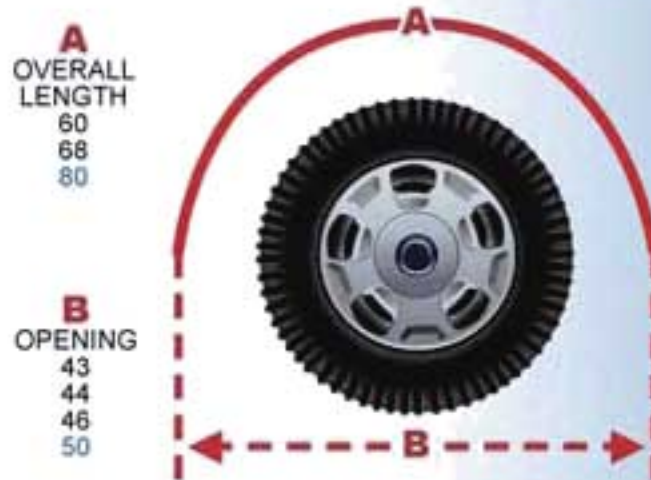
MATERIAL

Stainless Steel Aluminum Galvanized Poly



LIFE-TIME STANDARD DIMENSIONS

SINGLE AXLE

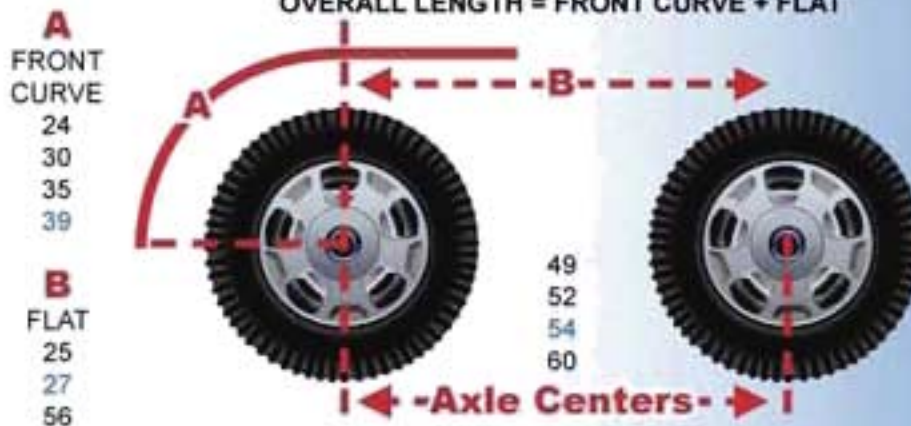


A
OVERALL LENGTH
60
68
80

B
OPENING
43
44
46
50

HALF TANDEM

OVERALL LENGTH = FRONT CURVE + FLAT



A
FRONT CURVE
24
30
35
39

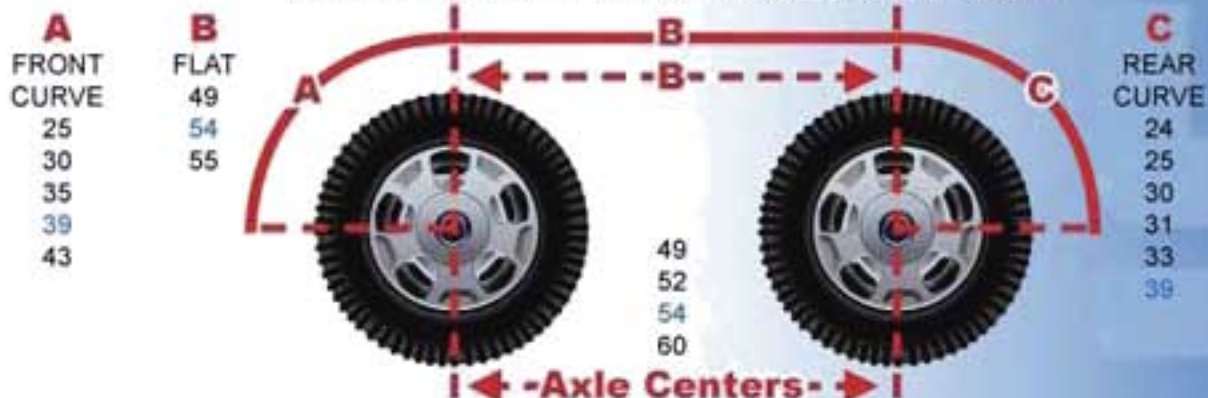
B
FLAT
25
27
56

49
52
54
60

← -Axe Centers- →

FULL TANDEM

OVERALL LENGTH = FRONT CURVE + FLAT + REAR CURVE



A
FRONT CURVE
25
30
35
39
43

B
FLAT
49
54
55

C
REAR CURVE
24
25
30
31
33
39

49
52
54
60

← -Axe Centers- →

Custom Sizes Available!



BettsHD Headquarters

2843 South Maple Avenue

Fresno, CA 93725

Phone: 559.498.3304

Customer Service Fax: 559.445.9129

Toll Free: 800.227.2192

BettsHD.com

© 2013 BettsHD

